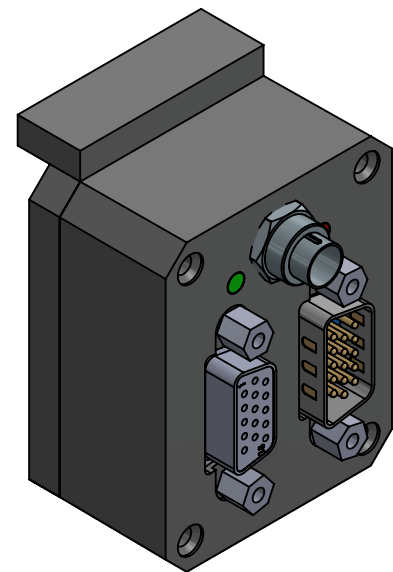
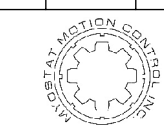


Signal	Parameter	Min	Max	Unit
Digital Inputs 1-8	Voltage Range	0	24	V
Photo-coupled	Low Level	0	1.4	
Sourcing/Sinking	Hi Level	1.4	24	
	Continuous Current	-	±30	mA
	Peak Current [1]	-	±0.5	A
	Pulse Width	1.2	-	ms
Output 2,3,4,5,7,8 [2][3]	Voltage Range	0	100	V
NPN - Sinking	Continuous Current	-	100	mA
Output 1,6 [4][5]	Voltage Range	0	24	V
NPN - Sinking	Continuous Current	-	1	A
	Inductive Load Peak Reverse Current	-	0.2	
	Inductive Load Peak Reverse Voltage	-	70	
M1_TX / M1_RX	Serial to motor 1 (Primary motor communication)			
M2_TX / M1_RX	Serial to motor 2 (daisy chain)			
RX_EXT / TX_EXT	Serial to External Device			
Input Power	Input Voltage	-	+24V	V



[1] PW = 100us, Duty Cycle = 1%
 [2] Resistive Loads Only
 [3] Not recommended to switch reactive loads
 [4] Not recommended to switch capacitive loads
 [5] Verify D1 and Q1 ratings for inductive loads. Part numbers on schematic

Unless otherwise specified, tolerance to be: CNS 4018 IT 14 Linear measures 0.5-3 ±0.1 3-6 ±0.1 6-30 ±0.2 30-120 ±0.3 120-315 ±0.5	NAME	DATE	DO NOT SCALE DRAWING	DIMENSIONS ARE METRIC	
	DRAWN	M. Dank	Dec-18-2012	TITLE: CM1 EIO Interface	
	CHECKED				
PROPRIETARY AND CONFIDENTIAL THE INFORMATION CONTAINED IN THIS DRAWING IS THE SOLE PROPERTY OF MYOSTAT MOTION CONTROL INC. ANY REPRODUCTION IN PART OR AS A WHOLE WITHOUT THE WRITTEN PERMISSION OF COOLMUSCLE INC. IS PROHIBITED.	 Myostat Motion Control Inc. +1 905-836-4441 www.myostat.ca	SIZE B PRT. NO. -EIO REV 0.0	SCALE: 1:2	WEIGHT: -	SHEET 1 OF 1