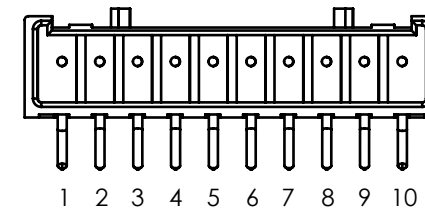
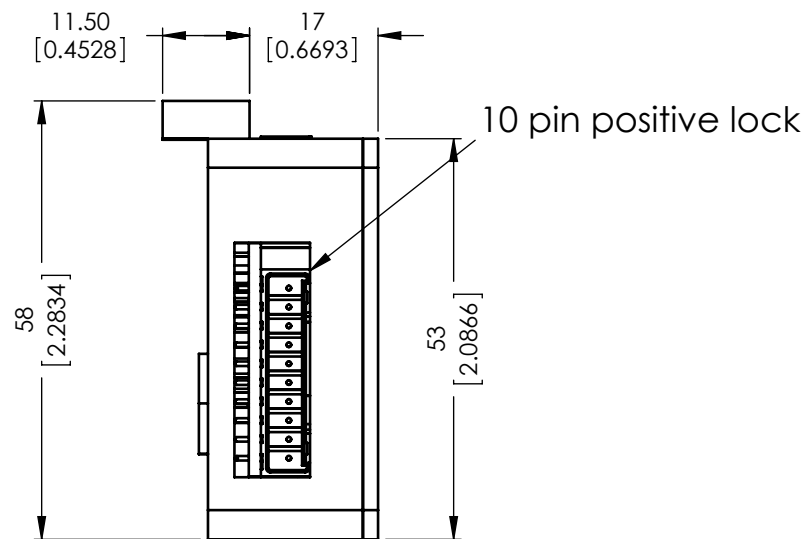
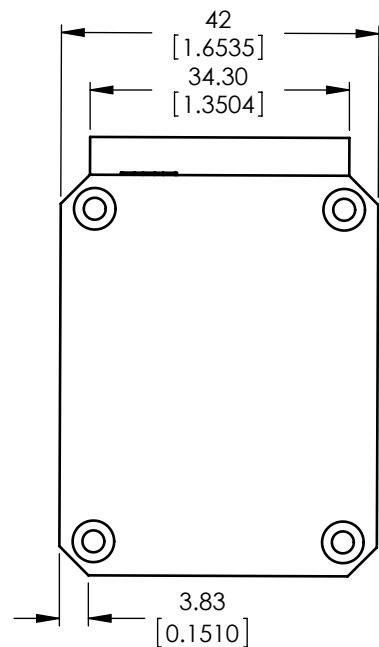


Cable	Part No.
Power	CM1-IPX-□□□□
Input/Output	CM1-IPX2-□□□□
Ethernet	RJ45

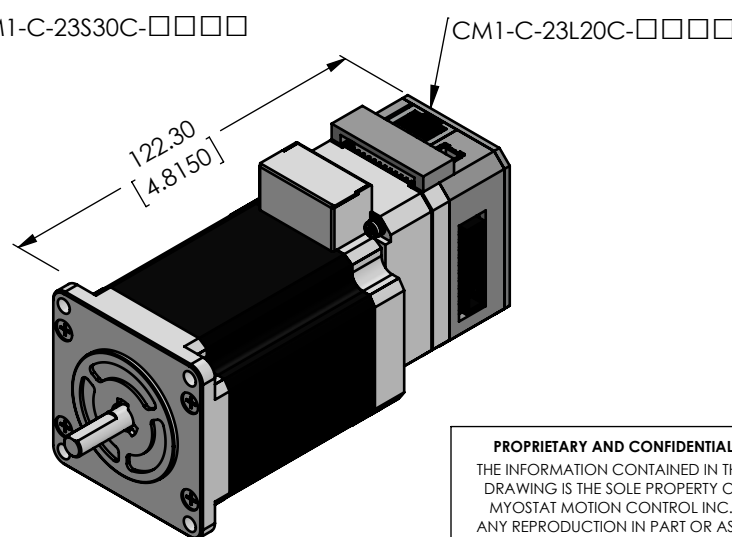
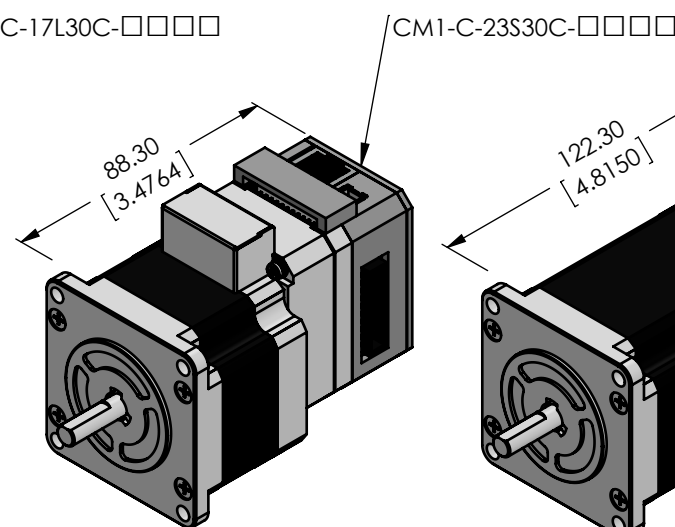
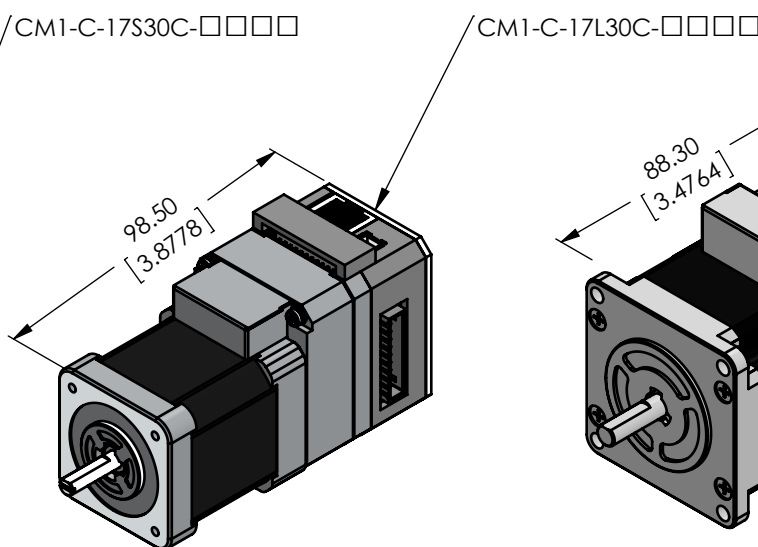
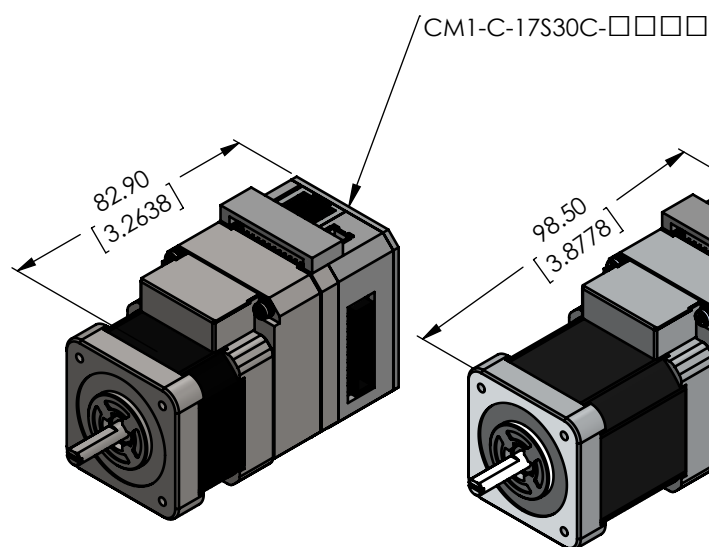
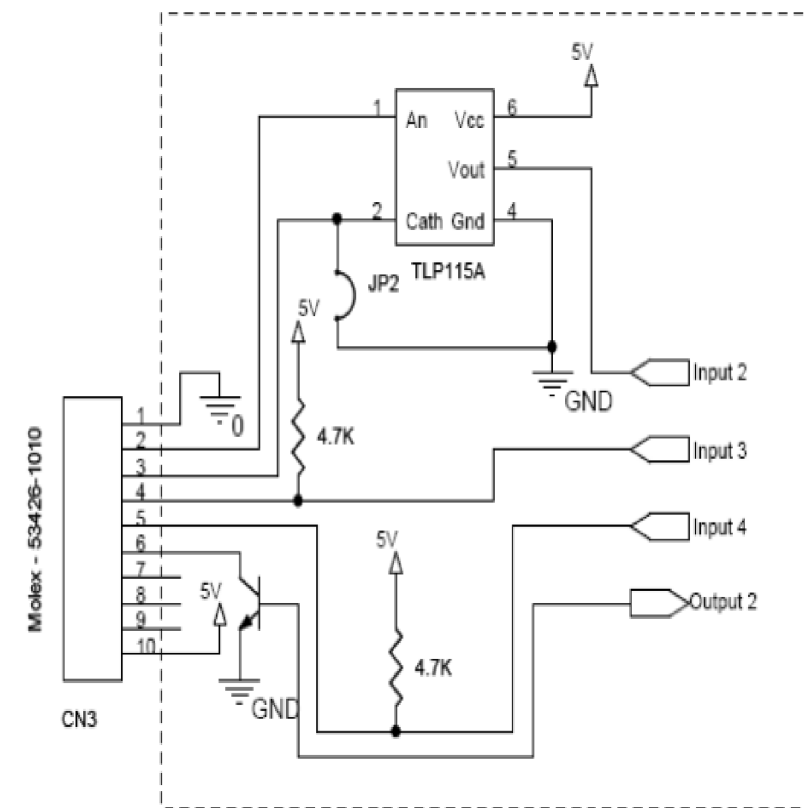
*□□□□ is cable length in mm



- 1 - GND (black)
- 2 - IN2+ (yellow)
- 3 - IN2- (white)
- 4 - IN3 (white)
- 5 - IN4 (blue)
- 6 - OUT2 (brown)
- 7 - not connected
- 8 - not connected
- 9 - not connected
- 10 - 5V (red)



Wiring Example



PROPRIETARY AND CONFIDENTIAL
THE INFORMATION CONTAINED IN THIS
DRAWING IS THE SOLE PROPERTY OF
MYOSTAT MOTION CONTROL INC.
ANY REPRODUCTION IN PART OR AS A
WHOLE WITHOUT THE WRITTEN PERMISSION
OF COOLMUSCLE INC. IS PROHIBITED.



NAME	DATE	DO NOT SCALE DRAWING	DIMENSIONS ARE METRIC
DRAWN M.DANK	DEC-21-2017	TITLE: CM1 Ethernet Interface	
CHECKED		SIZE B PRT. NO. -IPX/EIP/MBT REV 3.1	
ENG APPR.		SCALE: 1:1 WEIGHT: - SHEET 1 OF 1	